





SINCE  
2010  
”

# About \_\_\_\_\_ **Zist Abzar Co.**



The company was established with the aim of localizing the world's latest technologies in the production and commercialization of medical diagnostic products and started its activity in the direction of supplying part of the needs of medical diagnostic laboratories in the country.

During our continuous activity, we succeeded in patenting international patents and setting up a fully mechanized production line of all types of immunochromatography kits by taking advantage of nanoparticle technology, and today, with the wide variety of our products in 16 high-quality diagnostic types, We are known as one of the successful manufacturers of diagnostic products.





**Hormone**  
Diagnostic Kits



**Drug of Abuse**  
Diagnostic Kits



**Infection Disease**  
Diagnostic Kits



**Cardiac Markers**  
Diagnostic Kits



**Toxins & Medicines**  
**Remnants in Food**  
Diagnostic Kits



## WE BELIEVE IN **NANO** INNOVATION



We at Zist abzar, with the scientific power and experience of the founders of the company in the field of diagnostic products, were able to identify the gaps in the market by compiling a written program and provide appropriate solutions to respond to them.

In this way, we not only examined the new and advanced technologies of the world, but also studied the facilities and infrastructures in the country and the methods of renewing and updating them.

We have taken a big step towards the production of quality and competitive products at the international level with a firm determination and continuous effort. And we are proud to patent and produce advanced products in several different areas, including:





**2013**

- Localization of the production of all types of immunochromatography kits with a special method
- Implementation of various internal and external standards to maximize the quality of manufactured products



**2014**

- Setting up a fully mechanized production line for all types of immunochromatography kits

**2017**

- Setting up the production line of diagnostic kits for infectious diseases



**2018**

- Setting up a production line of biomarker detection kits

**2020**

- Launching the production line of rapid detection kits for Covid-19 antibodies



**2021**

- Launching the production line of rapid detection kits for Covid-19 antigen

**2022**

- Introducing the kit reader to the market

# Our TIMELINE



**2010**

- Setting up the production line of TLC kits
- DNA and RNA extraction
- Cell staining

**2011**

- International patent and production of automatic drug extraction device for the first time in Iran



**2012**

- International patent and production of DNA and RNA extraction device for the first time in Iran



**NANO  
TECHNOLOGY**







## Abilities & Capabilities



We in the Zist abzar, by innovating and relying on the latest research in the field of medicine, have simplified the methods of working with products and increased the accuracy of their responses. By using nanoparticle technology in making diagnostic kits, we not only minimized their response time, but also increased their detection accuracy to 99.8%. The high quality of test detection bands is one of the other achievements that we have achieved by using modern production and laboratory equipment. In order to gain the confidence of customers and to consider the general health of the society, we have obtained the necessary standards for a quality and worthy product. All the products of the Zist abzar are approved by the Ministry of Health and Medicine of Iran.

# Our Vision

By getting to know and evaluating the market of other countries and participating in regional exhibitions, we intend to discover ways to be present in international markets and to enable the export of our products to all parts of the world. In this way, we have increased the efficiency of different departments of the company by putting meritocracy at the forefront and striving to implement it, and by using expert forces and continuous training of personnel. Therefore, keeping in mind the principles of customer orientation, we have launched a customer complaint follow-up system in order to satisfy them and ensure that customers' needs are met, to get to know the tastes of users and to take a step forward in improving the quality of products.





## Differences of Zist Abzar

- The knowledge of nanoparticles has been used in the production and design of diagnostic kits.
- The accuracy and reliability of all diagnostic kits have been increased to 8.99%.
- The method of working with products has been simplified as much as possible.
- Rima diagnostic kits require minimum response time.
- All the products of this company are approved by the General Directorate of Medical Equipment of Iran.
- The company has the honor of cooperating with reputable scientific research centers, such as Comprehensive Research Laboratory and Tehran University of Medical Sciences.



## Making Kits Using Nanoparticle Technology

Nanoparticles are used in these tests as a substrate with a high surface-to-volume ratio, mobility, and color creation agent. These tests use different nanoparticles such as gold nanoparticles and fluorescence nanoparticles, and have the ability to perform qualitative, semi-quantitative and quantitative tests. Diagnostic molecules in their simplest form are monoclonal antibodies and their fragments, which can also be replaced by 3D printed spatial structures, nucleic acid fragments, other ligands, and aptamers. Rapid tests can detect a wide range of substances including hormones, various proteins and antigens, residues of toxins and their metabolites, dyes, residues of antibiotics and protein factors of infectious diseases. Currently, the use of these tests is expanding rapidly due to the ease of use and the lack of expertise of the tester, and it is likely to become a widespread tool in the future.



## Acquired Standards

- Nanoscale certificate from the Nano Technologies Development Headquarters, Scientific Vice President
- Standards of ISO13485 in the field of medical equipment
- GMP standard according to the most modern production conditions
- Quality management system (ISO9001) and registration of customer complaints (ISO10002) from IMQ Italy
- License to manufacture medical devices from the Ministry of Health and Medical Education of Iran





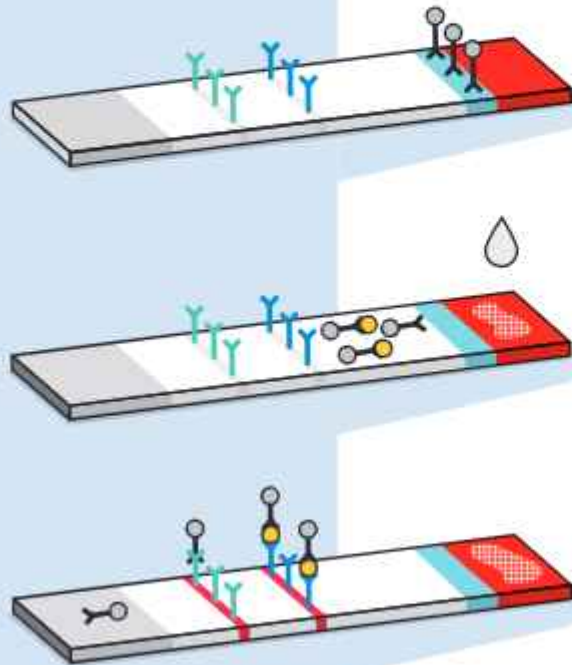
# Our Products







## What is \_\_\_\_\_ Rapid Test Kit?



Rapid test assay are precise, cheap, fast and portable compared to other diagnostic methods and are used in many fields such as medicine, veterinary medicine, food and pharmaceutical industries. These tests require a small amount of specimen to show results. On the other hand, these tests are qualitative and are usually able to detect the substance in question within 1 to 10 minutes, which depends on the type of test and the type of specimen. Another advantage of rapid tests is that no special experience or skill is required in using them, and any untrained person can use them easily by reading the instructions in each test. These tests are a type of POCT tests, that is, tests that patients or people who use it do not need a doctor's reference or specialized laboratories to diagnose the target substance, and can be done at any place and time they need. Use these tests and see the results.

Today, many tests to diagnosis various substances, including some hormones, drugs, pathogenic agents and food and water contaminating agents, have been made with this method and are used in most countries. These tests have been able to show acceptable results in measurements and screenings, which caused the health organizations in most countries of the world to issue a license to manufacture and use them in clinics and paraclin-ics. Due to the wide range of substances that can be detected by this method and its easy use, in recent years, the desire of people in most countries, including Iran, to use these tests has increased.



**RIMA**<sup>®</sup>

Be aware, take care!



# About Rima



The Rima brand is one of the products of the large and powerful family of Zist abzar Company, which has offered its products in the field of rapid diagnosis kits to the noble people of Iran with the aim of raising the level of public health and the ability of quick and precise individual diagnosis. The name Rima is inspired by Lake Urmia, this blue jewel of our dear Iran; To be a source of life, purity and light, Rima is a graceful name of Iran land and a melodious promise of health and well-being. This large family was able to open a clear path among the customers of these products with its diverse product collection and establish its position among consumers by creating a sense of trust and confidence and a pleasant user experience. That is why we are proud that your trust adorns it. The trust that encourages us day by day to try to progress and improve ourselves and take steps in bigger fields. We are proud that our name is a promise of healing and health for you. As in the past, the Rima family is taking steps in the path of growth and dynamism and in this winding path, it is trying to evaluate and meet the needs of its consumers as much as possible. We intend to maintain the unique capabilities of our products, including the use of nano-particle technology in their production; and increase the number of products and their quality. Obviously, your confidence and presence is the light of our future; Because Rima is another name for your trust.



correct functioning of different tissues and organs. Therefore, some of the products of this company have been designed and produced to screen and detect some hormones. Rima rapid diagnosis kits are able to diagnose all types of pregnancy hormones (B-HCG), ovulation (LH) and follicle stimulating hormones (FSH).

## Pregnancy Diagnosis kit

1

The pregnancy hormone called human chorionic gonadotropin (HCG) is necessary for the production and function of the placenta in the first days of pregnancy to nourish the fetus in the womb in early pregnancy. After the secretion of this hormone by the placenta, some of it enters the mother's blood and urine, and its measurement is a proof of the beginning of pregnancy. The measurement of this hormone is used as one of the pregnancy diagnosis methods in all over the world today.

Rima's rapid pregnancy diagnosis test, with very high precision and efficiency (more than 99%), and fast response time (within a few seconds), is a convenient, precise and cheap test. This test can be performed directly without the need for laboratory equipment, and each person is able to perform and interpret the results on their own. This test has a production and distribution license from the Ministry of Health. This device is designed for diagnostic use outside the human body and has different types, which include:







## Hormone Diagnosis kits



Hormones are chemical agents of different types that are produced and secreted in response to a specific stimulus. According to the place of secretion and the place of effect, hormones are divided into different types such as autocrine, endocrine and paracrine. Endocrine hormones usually enter the bloodstream and carry the message throughout the body to all target cells. Hormones usually exert changes in the target cell according to different mechanisms. Hormones usually have control effects on body cells, tissues and various organs. In terms of function, it can be said that some hormones have local actions (related to a specific place in the body) and some general actions.

There are two general types of hormones in the human body: steroid hormones such as sex hormones and amino acid hormones such as insulin. Usually, amino acid or protein hormone receptors are located on the membrane of the target cells, and steroid hormone receptors are located in the cytoplasm or on the nucleus. Insulin, glucagon, growth hormone, thyroid hormones, cortisol as well as sex hormones such as testosterone, estrogen and progesterone are the most famous hormones in the body. The amount of hormones is regulated by the complex interactions of the endocrine system and the nervous system. Considering the key role of hormones in sending different messages and regulating metabolism and growth and development of the body at different ages, measuring the amount of hormones secreted in the body is a determining factor in determining the health of the body and the

# Mid-Stream Pregnancy Diagnosis Kit

Ease of use, fast response, precise diagnosis and beautiful design are the advantages of Rima mid-stream diagnosis kit.



**Method of test:**  
Manual, professional user, personal use



**The substance to be measured:**  
Human chorionic gonadotropin (HCG)

No need for external measuring equipment.

 **99.8%**

**Accuracy:** 99.8%  
**Sensitivity:** 25 mIU

 **1-3  
minutes**

**Response speed:**  
1 to 3 minutes

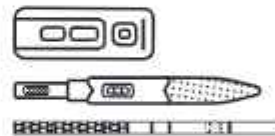
**Specificity:** 100%





## Blood Pregnancy Diagnosis Kit

Measurement of human chorionic gonadotropin hormone or HCG is the basis of pregnancy diagnosis in many kits. This hormone is secreted from the placenta in the early days of pregnancy and can be measured immediately in the blood. The increase of this hormone in the blood occurs before the increase in the urine, so it has the ability to detect pregnancy more quickly.



 **99.9%**

Accuracy: 99.9%  
Sensitivity: 10 mIU

Method of test:  
Manual, professional user, personal use



The substance to be measured:  
Human chorionic gonadotropin (HCG)

Measured samples:  
blood

 **1-3  
minutes**

Response speed: 1 to 3 minutes  
Specificity: 100%

No need for external measuring  
equipment.

## Ovulation Diagnosis kit

2

LH hormone is also known as ovulation hormone and is one of the most important hormones to get the approximate time of ovulation. This hormone is made of glycoprotein and its molecular weight is 30 kilodaltons. Naturally, the hormone LH, in cooperation with another hormone called FSH, plays a role in regulating ovulation and the length of the menstrual period. Researches have shown that in a normal menstrual cycle and without the use of drugs that affect this cycle, the amount of LH in the blood increases dramatically around the middle of the menstrual period. The result of this increase is egg maturity in the next 24 to 36 hours and the mature egg is ready to be released. After the release of the egg, the amount of this hormone decreases for about two days. This process of increase and decrease occurs during each menstrual cycle. Therefore, due to the significant increase and decrease of LH hormone in the middle of menstruation, its quick and accurate diagnosis plays an important role in pregnancy management and infertility treatment in women. Measuring the amount of LH is a suitable and successful method to determine the time of egg release for natural pregnancy or artificial insemination. The types of LH diagnosis tests produced in the Zist abzar company are as follows:







## Cassette & Strip Pregnancy Diagnosis Kit

The unique design of the pregnancy diagnosis cassette has increased the precision and efficiency of the product by 98%, and its use has become significantly easier.

The possibility of simultaneous diagnosis from serum and urine specimens, along with high precision in diagnosis, has made the strip pregnancy diagnosis kit find a special place among pregnancy diagnosis products. This product is used in laboratory and clinical diagnosis industries.



**Method of test:**

Manual, professional user, personal use



**The substance to be measured:**

Human chorionic gonadotropin (HCG)

**No need for external measuring equipment.**



**99.8%**

**Accuracy:** 99.8%

**Sensitivity:** 25 mIU



**1-3  
minutes**

**Response speed:**

1 to 3 minutes

**Specificity:**

100%



## Menopause Diagnosis kit

3

FSH hormone is a glycoprotein and its molecular weight is about 25 kilodaltons. Research has shown that this hormone is secreted from the pituitary gland and its role is the growth and maturation of sexual organs and secondary sexual characteristics. This hormone plays an important role in the production and development of gametes (sperm or egg) in both men and women. FSH in women causes the growth of ovarian follicles. The most common reasons for performing this test in women are: investigating infertility problems, investigating irregular menstrual cycles, and diagnosing pituitary gland disorders or ovarian diseases. FSH, like LH, is used for natural or artificial pregnancy. The Zist abzar company FSH hormone detection tests are as follows:





## Ovulation Cassette, Midstream & Strip Diagnosis Kit

Due to the design of the midstream LH diagnosis kit cassette format, this product is suitable for testing in all kinds of environments without interfering with other equipment. The LH diagnostic cassette Kit is designed to be more convenient to use and eliminate environmental and measurement errors, which allows the user to measure in any environment. The strip LH detection kit comes in packs of 5, which, in addition to being affordable, has the ability to measure hormone changes over a period of time.



99.7%

Accuracy: 99.7%  
Sensitivity: 25 mIU

### Method of test:

Manual, professional user, personal use



The substance to be measured:  
Luteinizing hormone (LH)

No need for external measuring  
equipment.



1-3  
minutes

Response speed:  
1 to 3 minutes

Specificity:  
100%



## Drug of abuse Diagnosis kits



Addiction test is performed as a legal test to investigate drug abuse and people's dependence on it. The usual method in laboratories is to screen people's samples with rapid immunochromatographic tests to identify suspicious people and then perform a confirmatory test with a standard method based on chemical analysis.

One of the most used rapid tests is drug detection tests. In this type of tests, the desired narcotic residue in biological samples, especially urine, is used to detect its concentration. After consumption, drugs enter the blood circulation and then the rest will be excreted by the kidneys through urine. Therefore, the urine sample is the most suitable sample for measuring the amount of drugs in the body in the whole world.

Due to the simplicity of use and the type of specimen (urine), these tests are easy to perform in most places. These tests can detect different drugs and each test is usually used to detect a substance or its residues in the body. To detect several types of drugs, usually these tests can be used in the form of panels of three, five and ten. In these types of tests, drugs cannot be detected in any concentration. The minimum diagnostic concentration (detection limit) in these tests will be determined according to the standards of the Ministry of Health of each country.

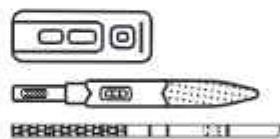







## Menopause Cassette, Midstream & Strip Diagnosis Kit

According to the design of the FSH midstream diagnosis cassette format, this product is suitable for testing in all kinds of environments without the need for other equipment. The FSH deficiency diagnosis kit is designed to be easier to use and eliminate environmental and measurement errors, and allows the user to measure in any environment. The strip FSH diagnosis kit is available in packages of 5, which, in addition to being economical, has the ability to measure hormone changes in one period.



 **99.7%**

Accuracy: 99.7%  
Sensitivity: 25 mIU

**Method of test:**  
Manual, professional user, personal use



 **1-3 minutes**

**The substance to be measured:**  
Follicle-stimulating hormone (FSH)

**Response speed:**  
1 to 3 minutes

**No need for external measuring equipment.**

**Specificity:**  
100%

## Morphine Diagnosis kit

In 1804, the first known opium alkaloid was named morphine. Since 1850, when hypodermic syringes were introduced to the market, the use of morphine has increased. Morphine is extracted from opium, or it is obtained from poppy seeds, and it is in the form of a crystalline powder with a light pink or white color. The morphine strip test is an advanced, fast and high-quality one-step test that is used for the qualitative detection of morphine and its metabolites in urine or serum. This test is suitable for professional users or personal use at any place and time.



### Method of test:

Manual, professional user, personal use



The substance to be measured:  
Morphine and its metabolites

No need for external measuring equipment.

 **99.8%**

Accuracy: 99/8%

Sensitivity: 300 ng/mL

 **1-3  
minutes**

Response speed:  
1 to 3 minutes

Specificity: 100%

2





# 1

## Amphetamine Diagnosis kit

Amphetamines are a group of brain stimulating substances, which are usually seen as a white powder and sometimes white to light brown or white pus. They are structurally related to the neurotransmitters norepinephrine, epinephrine, and dopamine, and are also known as sympathomimetic or central nervous system stimulants. These compounds include methylphenidate, dextroamphetamine, and methamphetamine. These substances enter the central nervous system, and lead to the sudden release of the chemical messenger dopamine from the brain. The sudden release of dopamine causes stimulation of brain cells, and a sudden increase in mood, an aggressive and uncontrollable state in a person, and an increase in physical movements. If you continue to use it after a long time, symptoms of moodiness, depression, and symptoms of movement disorders such as Parkinson's will appear in the person. This test is suitable for professional user testing or personal use at any place and time. Amphetamine strip test is used for screening,



**Accuracy:**  
99.7%

**Method of test:**

Manual, professional user, personal use

**Sensitivity:** 25 mlu

**The substance to be measured:**

Follicle-stimulating hormone (FSH)

**Response speed:**

1 to 3 minutes

**No need for external measuring equipment.**

**Specificity:**  
100%

# Methamphetamine Diagnosis kit

This material was made in Japan in 1893. In World War II, it was used by Japanese, American, and German soldiers to relieve fatigue and increase energy. Methylamphetamine, known on the black market as crystal, is the name of a stimulant. Methamphetamine creates happiness and excitement in a person by directly affecting the structure of the brain. The main composition of this substance is derived from C9H13N amphetamine, which is a stimulant and addictive substance, and it strongly stimulates the brain and nervous system, and chemically, its effect is greater than amphetamine. This test is suitable for testing by a professional user or for personal use at any place and time. Methamphetamine strip test is used for screening.



**Method of test:**  
Manual, professional user, personal use



**The substance to be measured:**  
Methamphetamine and its metabolites

**No need for external measuring equipment.**

 **99.8%**

**Accuracy:** 99.8%  
**Sensitivity:** 500 ng/mL

 **1-3 minutes**

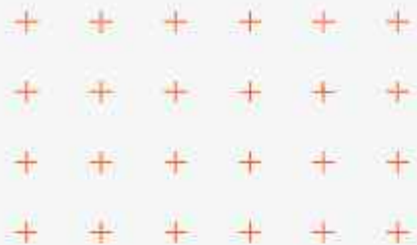
**Response speed:**  
1 to 3 minutes

**Specificity:** 100%

4







# 3

## THC Diagnosis kit

Hashish is a substance obtained from the seeds of the hemp plant. The difference between hashish and marijuana is that marijuana is obtained from the dried leaves and flowers of the hemp plant. Tetrahydrocannabinol, also known as THC, delta-9-THC, and delta-9-tetrahydrocannabinol, is one of the cannabinoids and the main neurostimulant found in cannabis. This substance affects the central nervous system of the body and causes side effects such as weakness, increased sensitivity of the senses, and impaired perception of the environment. The hashish strip test is a one-step, fast and high-quality test that is used for the qualitative detection of hashish and its metabolites in biological specimens (urine). This test is suitable for testing by a professional user or for personal use at any place or time.



**Method of test:**  
Manual, professional user, personal use

**Accuracy:** 99/8%  
**Sensitivity:** 50 ng/mL



 **1-3 minutes**

**The substance to be measured:**  
THC (Tetrahydrocannabinol)

**Response speed:**  
1 to 3 minutes

**No need for external measuring equipment.**

**Specificity:** 100%



## Methadone Diagnosis kit

Methadone was first developed in Germany during World War II. Over time, methadone became the drug used by doctors to treat drug addiction. Methadone is a synthetic drug that is used in the form of tablets, syrups and ampoules, and the types of tablets and syrups are taken orally with specific doses. The methadone strip test is a one-step, fast and high-quality test that is used for the qualitative detection of methadone and its metabolites in urine and serum. This test is suitable for testing by a professional user or for personal use at any place and time. Methadone strip test is used for screening.



**Method of test:**  
Manual, professional user, personal use



**The substance to be measured:**  
Methadone and its metabolites

**No need for external measuring equipment.**

 **99.8%**

**Accuracy:** 99.8%  
**Sensitivity:** 300 ng/mL

 **1-3 minutes**

**Response speed:**  
1 to 3 minutes

**Specificity:** 100%

6





# 5

## Tramadol Diagnosis kit

7



 **99.8%**

**Method of test:**  
Manual, professional user, personal use

**Accuracy:** 99.8%  
**Sensitivity:** 50 ng/mL



 **1-3 minutes**

**The substance to be measured:**  
TML(Tramadol)

**Response speed:**  
1 to 3 minutes

**No need for external measuring equipment.**

**Specificity:** 100%

# Buprenorphine Diagnosis kit

8

?



**Method of test:**  
Manual, professional user, personal use



**The substance to be measured:**  
Methadone and its metabolites

**No need for external measuring equipment.**

 **99.8%**

**Accuracy:** 99.8%  
**Sensitivity:** 300 ng/mL

 **1-3 minutes**

**Response speed:**  
1 to 3 minutes

**Specificity:** 100%



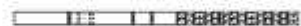




7

## Benzodiazpine Diagnosis kit

7



 **99.8%**

**Method of test:**  
Manual, professional user, personal use

**Accuracy:** 99.8%  
**Sensitivity:** 50 ng/mL



 **1-3  
minutes**

**The substance to be measured:**  
TML(Tramadol)

**Response speed:**  
1 to 3 minutes

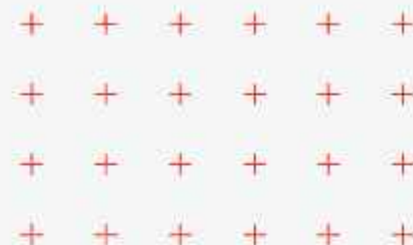
**No need for external measuring  
equipment.**

**Specificity:** 100%

# Barbiturate Diagnosis kit

?

10



**Method of test:**  
Manual, professional user, personal use



**The substance to be measured:**  
Methadone and its metabolites

**No need for external measuring equipment.**

 **99.8%**

**Accuracy:** 99.8%  
**Sensitivity:** 300 ng/mL

 **1-3 minutes**

**Response speed:**  
1 to 3 minutes

**Specificity:** 100%





# 9

## Tricyclic antidepressant Diagnosis kit

7



 **99.8%**

**Method of test:**  
Manual, professional user, personal use

**Accuracy:** 99.8%  
**Sensitivity:** 50 ng/mL



 **1-3 minutes**

**The substance to be measured:**  
TML(Tramadol)

**Response speed:**  
1 to 3 minutes

**No need for external measuring equipment.**

**Specificity:** 100%

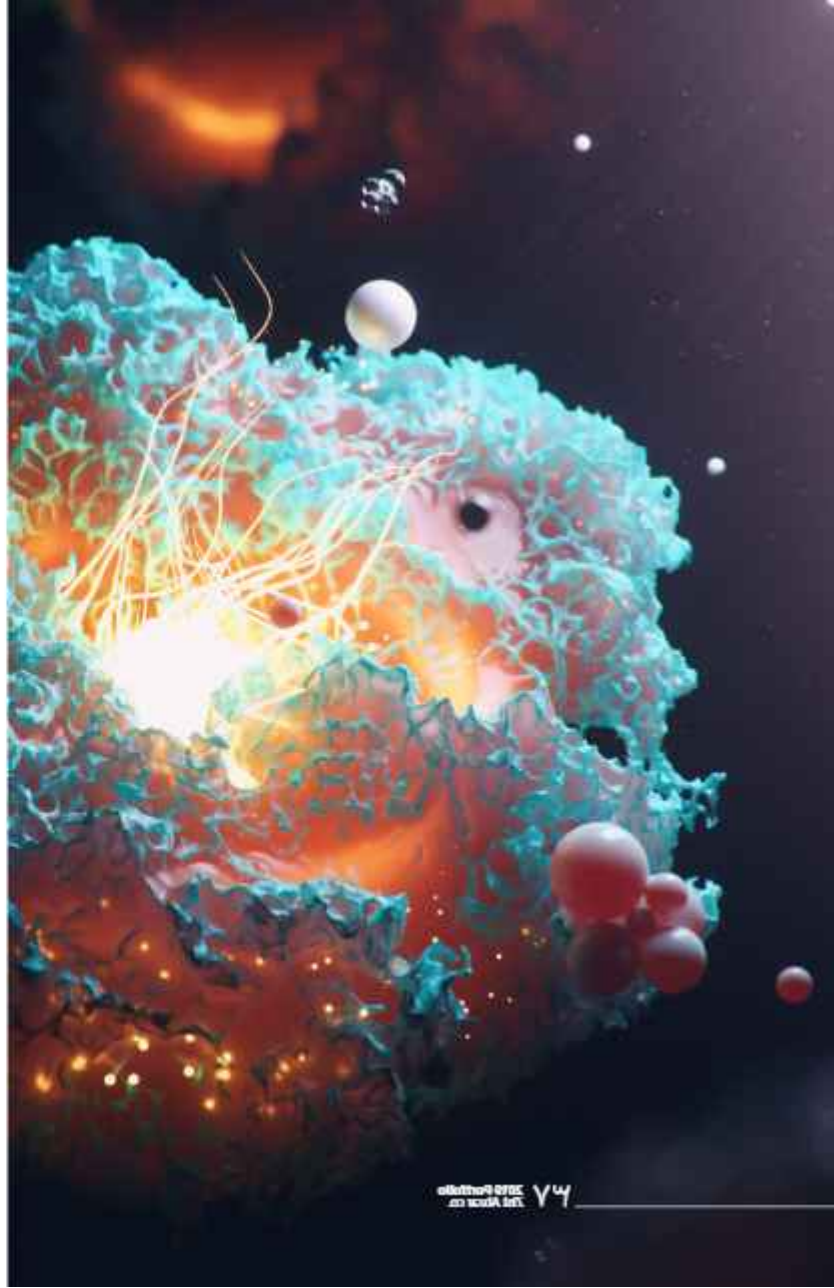


## Infectious Disease Diagnosis kits



Infectious diseases are the result of the invasion of microorganisms such as bacteria, viruses, fungi and parasites into body tissues, which usually include a high percentage of diseases in different societies. According to the statistics published by the World Health Organization in 2010, 10 million people in the world died due to infectious diseases. In infections, like many other diseases, early diagnosis and timely treatment prevent disease progression, spread and long-term problems. Early diagnosis and timely treatment will be possible through appropriate diagnostic tests. Due to the many types of microorganisms that cause infection, there are many tests and diagnostic methods to identify and choose their treatment method.

Today, in order to identify many infectious agents, rapid detection methods such as immunochromatography and ELISA methods have replaced time-consuming methods such as microbial culture. The company's infectious disease diagnostic kits include: AIDS diagnostic kit, HCV hepatitis diagnostic kit, and Helicobacter pylori diagnostic kit.







11

## 3 - panel Drug of abuse kit

The three panel test is widely used for rapid diagnosis of morphine, amphetamine and methamphetamine. Rapid and qualitative test based on immunochromatography, which has the ability to semi-quantitatively detect morphine, amphetamine and methamphetamine in urine and serum. The detection limit for morphine, amphetamine and methamphetamine test is 300 ng/mL, 500 ng/mL and 500 ng/mL respectively.

The substance to be measured:  
3 -panel (MDR/AMP/MET)

No need for external measuring equipment.

Response speed: 1 to 3 minutes

Specificity: 100%



12

## 5 - panel Drug of abuse kit

The five panel test is widely used for rapid detection of morphine, amphetamine, methamphetamine, methadone and Hashish. A rapid and qualitative test based on immunochromatography, which has the ability to detect semi-quantitatively morphine, amphetamine, methamphetamine, methadone and hashish in urine and serum specimens. The detection limit for morphine, amphetamine, methamphetamine, methadone, and hashish test is 300 ng/mL, 500 ng/mL, 500 ng/mL, 300 ng/mL and 50 ng/mL respectively.

The substance to be measured:  
5 -panel (MDR/AMP/MET)

No need for external measuring equipment.

Response speed: 1 to 3 minutes

Specificity: 100%

## HIV Diagnosis kit

2



The disease caused by the HIV virus is called AIDS, which stands for Acquired Immune Deficiency Syndrome. AIDS and HIV are different from each other, AIDS is a disease with specific signs and symptoms, but HIV is the name of the virus that causes this disease. A person infected with the virus may take years to become infected with AIDS (asymptomatic carrier), but unfortunately, during this time, he can transmit the disease to others. Currently, it is possible to find out the presence of the virus in a person's body only by doing a blood test from 2 weeks to six months after the first virus enters the body. About 70% of people experience mild symptoms such as: fever, sore throat, skin rash and swollen lymph nodes after initial infection with the virus. These symptoms disappear quickly and the person may not have any symptoms for a long time and may appear healthy. Then the virus multiplies in the body and destroys the body's defense cells (especially a type of white blood cells called lymphocytes). After a period of time when the body's defense cells have been destroyed to a certain level, then the person enters the stage of AIDS, which is actually the final stage of HIV infection, and in this stage, if a person is infected with any type of disease, due to lack of immune system Effective safety is seriously compromised.

### Method of test:

Manual, professional user, personal use

Accuracy: 99.1%

Sensitivity: 300 ng/mL

### The substance to be measured:

antibodies produced against HIV

Response speed: 1 to 3 minutes

Specificity: 100%

### The specimen to be measured:

serum, blood

No need for external measuring equipment.





1

## Covid-19 antibody Diagnosis kit



|||||■■■■■■■■■■

 **99.8%**

**Method of test:**  
Manual, professional user, personal use

**Accuracy:** 99.8%  
**Sensitivity:** 50 ng/mL



 **1-3  
minutes**

**The substance to be measured:**  
TML(Tramadol)

**Response speed:**  
1 to 3 minutes

**No need for external measuring  
equipment.**

**Specificity:** 100%

## Hepatitis Diagnosis kit

Hepatitis C is a viral infection that mainly affects the liver. The causative agent of this disease is a type of virus, which is a member of the Hepavirus genus in the Flaviviridae family. This virus has several main genotypes; usually genotype 1 is the cause of the disease in seventy percent of cases. Most people infected with this virus do not have any clinical symptoms, but chronic infection causes liver fibrosis and leads to liver cirrhosis after a few years. People usually get hepatitis C through blood contact caused by intravenous drug injections, unsterilized medical equipment, and blood transfusions.



### Method of test:

Manual, professional user, personal use



### The substance to be measured:

Antibodies produced against HCV virus

### The specimen to be measured:

serum- whole blood



**99.8%**

Accuracy: 99.8%

Specificity: 100%



**1-3  
minutes**

Response speed:

1 to 3 minutes

No need for external measuring equipment.

4







3

## H. Pylori Diagnosis kit

Helicobacter pylori is a spiral-shaped bacterium that usually causes stomach ulcers. It is believed that there is a relation between infection with this bacterium and the incidence of cancers of Guterres' system. About 50 to 80 percent of people in developing countries are infected with this bacterium, and the incidence of this bacterium increases with age.



### Method of test:

Manual, professional user, personal use



99.8%

Accuracy: 99.8%

Specificity: 100%



### The substance to be measured:

Bacterium antigen



8-10  
minutes

Response speed: 8 to 10 minutes

(including sample preparation)

### The specimen to be measured:

feces

No need for external measuring

equipment.

# Cardiac Markers Diagnosis kit

Considering the high speed of immunochromatographic tests and the need for high speed detection of Troponin I in people suspected of having a heart attack, the production and design of these kits can be a very important and effective step in rapid diagnosis when needed.

1



**Method of test:**  
Manual, professional user, personal use

 **99.1%**

**Accuracy:** 99.1%  
**Specificity:** 100%



**The substance to be measured:**  
Troponin

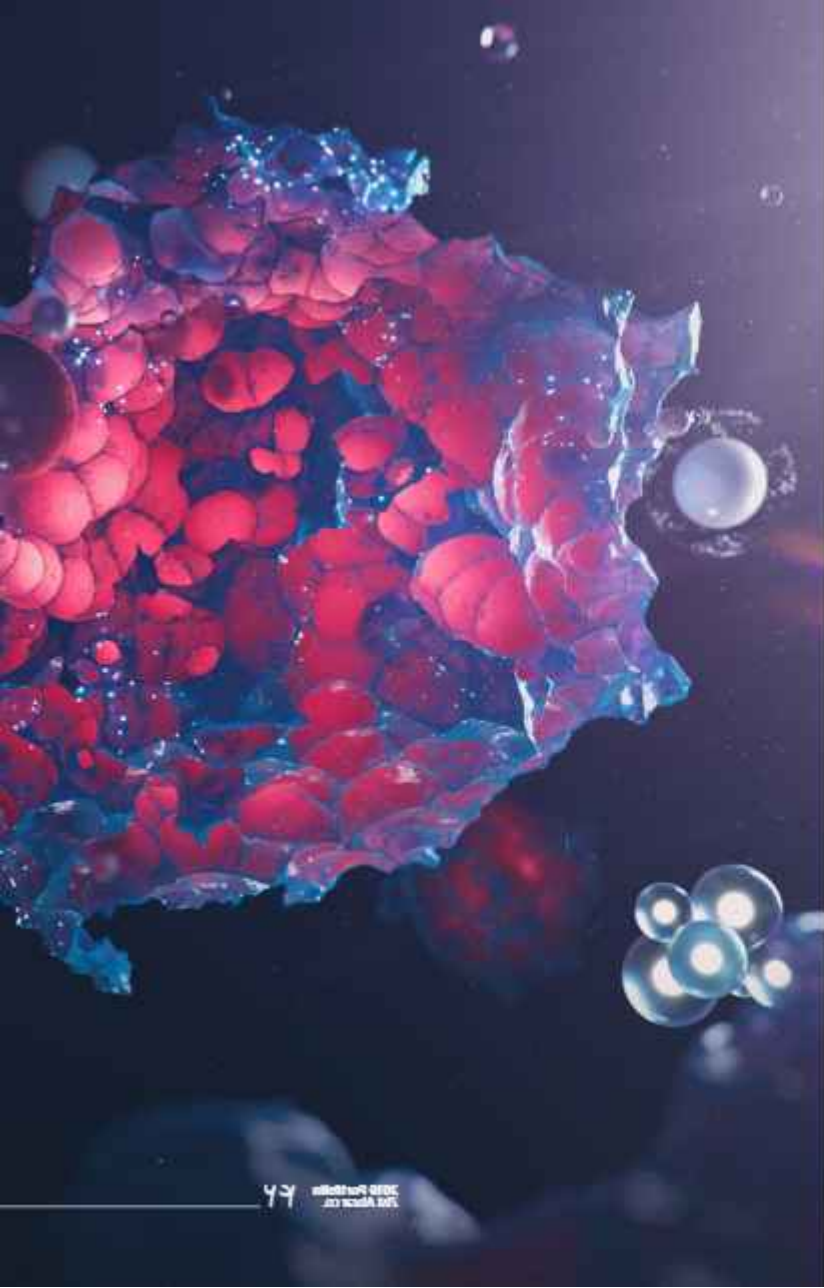
 **1-3  
minutes**

**Response speed:**  
1 to 3 minutes

**The specimen to be measured:**  
serum- whole blood

**No need for external measuring  
equipment.**





## Biomarkes Diagnosis kits



Tests to detect cardiac markers in the blood during a heart attack are very important in quickly diagnosing sick people and evaluating treatment or determining the risk of re-attack in the future. In the diagnosis of cardiac markers, one of the most important points is the speed of diagnosis, which can sometimes determine the fate of the patient. Common markers for evaluating heart function and the possibility of heart attack usually include creatine phosphokinase with neuromuscular isoform (CK-MB), aspartate aminotransferase (AST), lactate dehydrogenase (LDH), and troponin I (I). One of the best markers used in this work is troponin, which is a protein that controls the communication of contractile factors of muscles such as the heart. Troponins are a family of proteins, which exist in muscle fibrils, including skeletal muscles of the body as well as heart muscle, and cause muscle contraction.

There are different types of troponin, such as T, C, and I, among which type I is measured today as a marker for diagnosing heart attacks in medical diagnostic laboratories. Considering the high speed of immunochromatographic tests and the need for high speed diagnosis of Troponin I in people suspected of having a heart attack, the production and design of these kits can be a very important and effective step in rapid diagnosis when needed.



## Remnants of Toxins & Medicines in Food Diagnosis kits

Contaminant compounds enter food from the environment intentionally or unintentionally. These compounds enter the food chain of living organisms, and ultimately endanger their health. These pollutants enter the food chain from various sources, the most important of which are:- Pollutants from fossil fuels, nuclear tests, industrial companies (such as various metals, dioxins, polyimide hydrocarbons...)

- Pollutants used in food packaging and entering the food chain, such as: monomers, polymers, plasticizers, polychlorinated biphenyls, detergents and disinfectants.
- Microbial pollutants such as mycotoxins and enterotoxins.
- Agricultural pollutants such as residual fertilizers, pesticides, plant hormones
- Chemicals that are used in livestock farms and poultry farms and enter the human food chain, such as: medicines and food supplements used in livestock farming.

Considering the harmful effects of many of these pollutants on human health and the environment, their detection and determination can be an effective step in controlling their use and maintaining public health. There are different methods for measuring these pollutants according to their type and gender and the desired values for detection, The kits produced by the immunochromatography method are able to detect various types of these pollutants such as malachite green in food, and for efficiency and ease of use, they can be measured in any place.








2

## Fecal occult blood Diagnosis kit

Fecal occult blood is seen in some problems and diseases of the end parts of the digestive system. In some cases, the presence of blood in stool is related to diseases such as colon cancer, vascular dysplasia, diverticulitis and chronic anemia.



**Method of test:**  
Manual, professional user, personal use

 **99%**

**Accuracy:** 99%  
**Specificity:** 100%



**The substance to be measured:**  
Fecal hemoglobin

 **1-3 minutes**

**The specimen to be measured:**  
feces

**Response speed:**  
1 to 3 minutes

**No need for external measuring equipment.**



# دستگاه قابل حمل خوانشگر ریمایما

## Rima Reader Portable

کیت های ایمونوکروماتوگرافی به دلیل داشتن مزایای بسیار از قبیل قابلیت حمل، عدم نیاز به کاربر متخصص و قیمت مقرون به صرفه محبوبیت و اهمیت بسیار بالایی در پایش بیماری ها و آلاینده‌ها دارند؛ اما با توجه به کیفی و نیمه کمی بودن اینگونه تست‌ها امکان گزارش میزان ماده مورد اندازه‌گیری وجود ندارد به همین جهت دستگاهی مبتنی بر الگوریتم شبکه‌های عصبی و پردازش تصویر جهت کمی‌سازی کیت‌های کروماتوگرافی طراحی و با نام تجاری Rima Reader به بازار عرضه شد. دستگاه قابل حمل سنجش کمی کیت‌های ایمونوکروماتوگرافی، علاوه بر کمی‌سازی با دقت بسیار بالا و گزارش مقدار دقیق ماده مورد اندازه‌گیری، قابلیت اتصال به سرورهای مرکزی و پایش برخط شیوع بیماری‌ها و آلاینده‌های زیست محیطی را دارد.



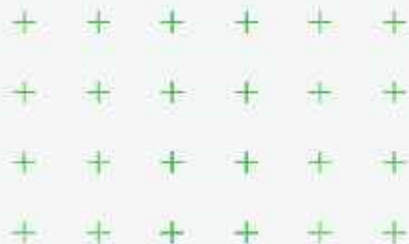
دقت در اندازه‌گیری:  
نانوگرم بر میلی‌لیتر

اختصاصیت: 7/100

حساسیت:

بر حسب کیت مورد پردازش

قابلیت اتصال به شبکه: دارد



# 1

## Malachite Green Diagnosis kit

Malachite Green is one of the materials used in fish breeding ponds. This substance has been used in the fisheries and aquaculture industry since 1936 due to its special features, but due to the discovery of its harmful effects on humans and the possibility of causing cancer, its use has been banned for more than 2 decades in many parts of the world. Malachite Green belongs to the group of antimicrobial drugs with external use, which are widely used in fish breeding ponds due to their high efficiency against fungi and the cheapest price among other similar compounds. The most common use of malachite green is against a type of fungus from the Saprolegnia family, which is one of the most important factors of external pollution in freshwater fish farming, and causes high losses, especially in the embryonic and larval stages of freshwater fish. This fungus supernaturally exists in the water supply sources of fish breeding workshops, and it will reduce the efficiency of artificial reproduction; so that it first grows on the dead eggs of fish and then it can spread to the neighboring healthy eggs. Unfortunately, malachite green used in fish breeding ponds enters the tissues of fish and after consuming fish, it can increase the possibility of cancer in people who consume it.



### Method of test:

Manual, professional user, personal use

Accuracy: 99/8%

Sensitivity: 300 ng/mL

### The substance to be measured:

Malachite green

Response speed: 1 to 3 minutes

Specificity: 100%

### The specimen to be measured:

tissue

No need for external measuring equipment.



# ارتباط با ریمما

## Contact Rima

### دفتر مرکزی

آدرس: تهران، خیابان کارگر شمالی، کوچه همدان، پلاک ۸، طبقه چهارم  
تلفن: ۰۲۷۴ ۶۶۹۱ ۰۲۱

### کارخانه

آدرس: تهران، شهریار، شهرک صنعتی گلگون، بلوار مرکزی جنوبی، بلوک ۱۰۵۹  
تلفن: ۰۲۱ ۵۶۷۱ ۶۴۳۵



تارنما: <http://zistabzar.com>

رایانامه: [info@zistabzar.com](mailto:info@zistabzar.com)

نمابر: ۰۲۱ ۵۶۷۱ ۶۴۳۶